

Sta ~~angle~~
~~327.5~~ ~~W side of Road~~ ~~angle~~
~~16°10'~~

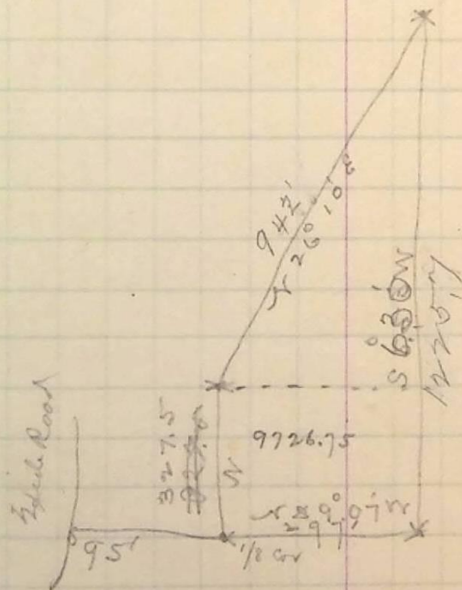
327.5 feet W side Road.

942.1 angle R $26^{\circ}10'$ Course S $26^{\circ}10' E$
~~1225.7~~ point in S. $630 W$ looking $S 26^{\circ}10'$
 W angle L $20^{\circ}17'$ - Course S $630 W$

1225.7 to point. thence

W 590.7 or 297 feet to beginning
 West 9.5 to W side Road.

Enc. July 28th 1896.



See page next